



# SEPHAKU CEMENT Progress and Challenges

22<sup>nd</sup> August 2013  
Thomas Thelingwani  
Implementation Manager



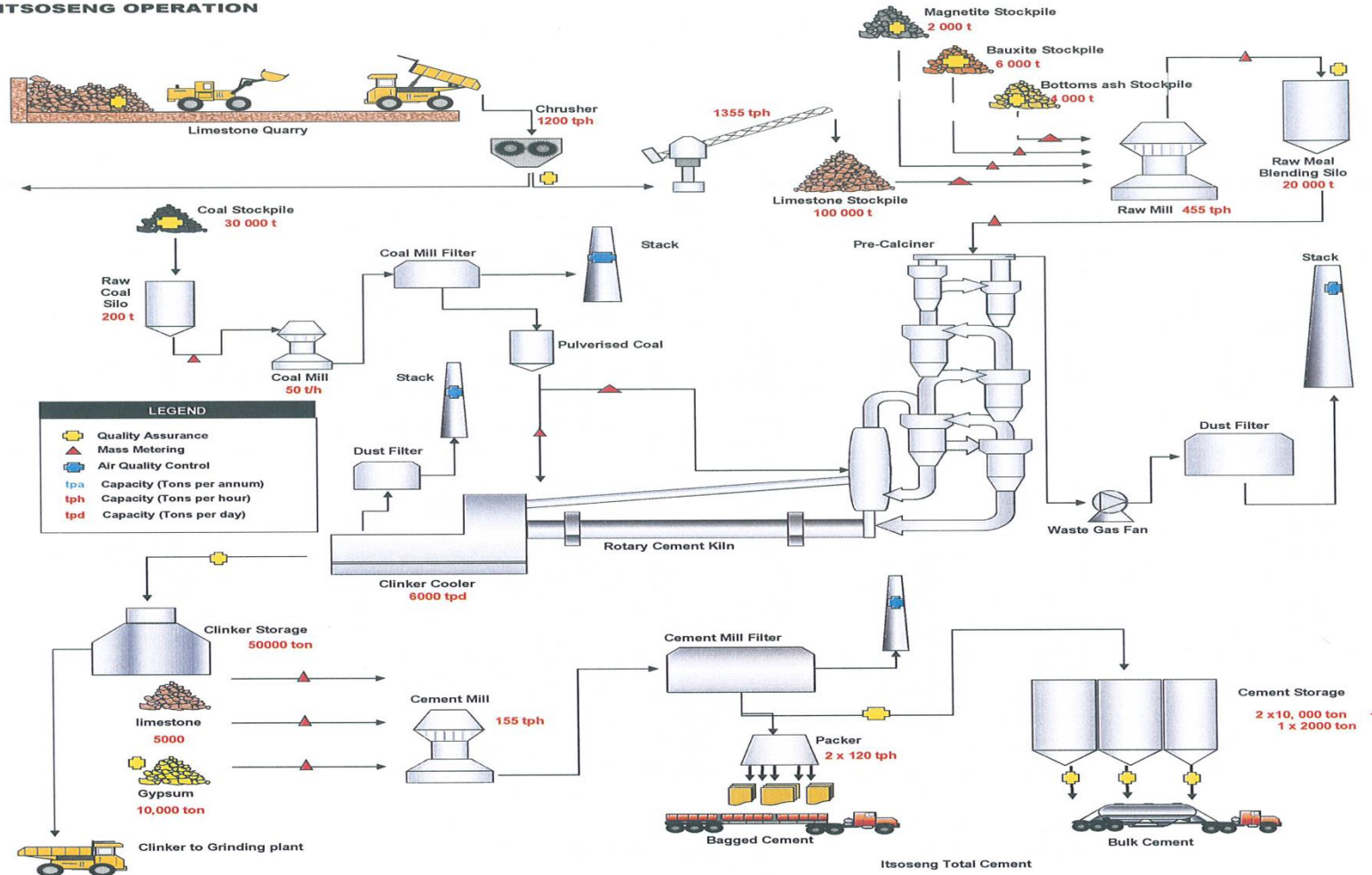
# Contents

- Cement Manufacturing process
- Progress
- Recruitment
- Training
- Challenges



# Cement Manufacturing Process

## ITSOSENG OPERATION





# Sephaku Cement Plants

## **Aganang Plant:**

- Construction of a 1.3 million tons a year clinker and cement production plant near Lichtenburg, in North West province.

## • **Delmas Plant:**

- Construction of a 1.3 million tons a year cement grinding plant in Delmas, in Mpumalanga province.

## • **Kendal Ash Plant:**

- Sephaku Cement (through its Sephaku Ash subsidiary) has constructed a R71 million state of the art Ash Plant
- In August 2009 – the 1,2 million tons per year Ash classification plant was commissioned



# Delmas Plant Project- progress

Overall Progress: 72%  
Civil Works: 92%  
Mechanical Works: 70%  
Electrical Works: 50%

## NON-TURNKEY WORKS:

ESKOM  
Construction: 100%

PEGASUS CIVIL CONSTRUCTION  
Progress: 35%



Cement Silo's



Clinker Unloading – De-Dusting



Cement Grinding (416BC03)



**DELMAS PROJECT  
PROGRESS UPDATE  
08/08/13**

Cement Packing Plant

Plant Access Roads – Entrance Circle



Siemens Hardware FAT - China





# Recruitment status

## **Jobs advertised as of 22/08/2013**

- Engineering
  - Fitters
  - Electrician
  - Planner
- Production:
  - Production Shift Supervisors
  - Process Operators
- Administration
  - Buyer
  - Accounts clerk
- Packing and Dispatch
  - Sales and Dispatch Supervisor
  - Dispatch clerks



# Enterprise development

## **Specification for the following outsourced functions in progress**

- Catering (onsite Staff Canteen)
- Clinic (onsite clinic – Health care professionals)
- Security services
- Gardening services
- Pallets supply
- Handling at Packing Plant





# Skills development

## Skills Development

- **Sephaku Cement Apprentice Training Programme**
  - 7 apprentices have completed and qualified as artisans
  - Two from Delmas community, namely:
    - Denny-boy Masilela (Electrical Apprentice)
    - Eddy Msiza (Fitter Apprentice)

**Dennyboy Masilela (Electrical)**



**Eddy Msiza (Fitting)**



**APPRENTICE TRAINING  
PROGRAMME  
DELMAS & AGANANG PROJECTS  
FEB 2011 – JULY 2013**





# Challenges

**Traffic flow along the R50 road is a major concern:**

- **Sephaku is committed developing an intersection with traffic lights into its plant.**
- **The intersection at the R50 road and R555 needs traffic lights and correct sequencing of all traffic lights on the R50 to promote better flow of traffic.**



**THANK YOU**